

Color Guide: Coated Metal

All Shift powdercoat colors have been formulated to be ultra-durable for improved long-term wear and resistance to weathering. All standard powdercoat finishes are no-VOC.

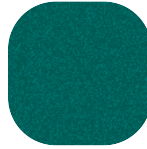
Standard Texture



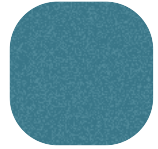
graphite



pearl



moss

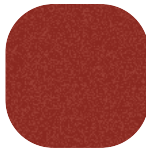


lake

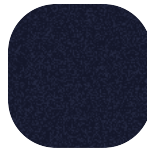
Custom Texture



fog



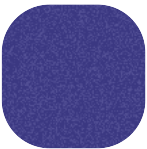
brick



ink



algae



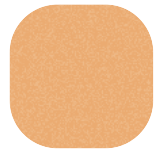
cobalt



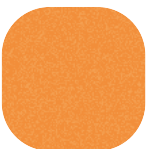
eggplant



cloud



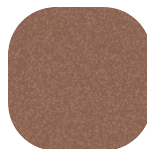
peach



turmeric



pewter



coconut



cacao

Color swatches are provided here as reference only. For color approvals, request a sample.

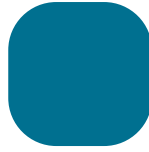
Custom Gloss



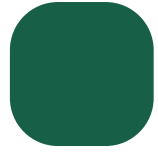
RAL 1018



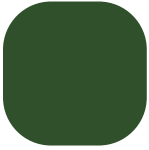
RAL 9016



RAL 5012



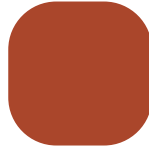
RAL 6016



RAL 6002



RAL 7031



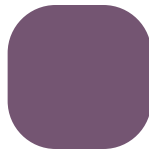
RAL 2001



RAL 1013



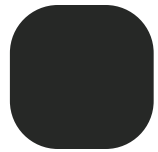
RAL 6027



RAL 4001



RAL 5002



RAL 9011

Color-Match | CMYK

The options shown here are just the tip of the iceberg. Our team can color-match from existing samples of paint, or match any RAL and Pantone you supply. Just say the word - your project can be as bespoke as you'd like. Even metallic.



Pretreatment

For improved performance, all aluminum parts go through an environmentally friendly pretreatment process. This pretreatment increases the adhesion of the powdercoat finish and creates a barrier that is highly resistant to environmental corrosion without the use of hazardous ingredients.

Endurance

Our powdercoat finishes have been specially formulated with dirt-repelling properties and for significantly prolonged gloss retention, which decreases the frequency of cleaning and maintenance. For long-term performance, our powdercoat finishes have high resistance to environmental factors such as UV rays and humidity, and other atmospheric components.

Color swatches are provided here as reference only. For color approvals, request a sample.